



## Classic Boost

*The Classic Boost is a dirty transistor boost based on the EHX LPB1™.*

### Bill of materials

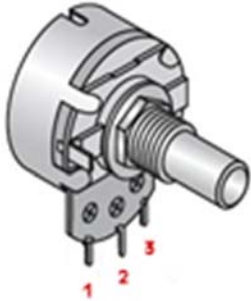
Resistors		Diode	
R1	1Meg	D1	1n4001
R2	10K		
R3	560R	Transistor	
R4	100k	U1	2n5088
R5	1Meg		
Capacitors		Potentiometer	
		Volume	100ka (9mm Log Pot)
C1	100nf (104)	Tone	100kb (9mm Linear Pot)
C2	10nf (103)		
C3	100nf (104)		

#### 1590a

The board spacing will fit a 1590a enclosure. You can mount 9mm pots directly to the board.

#### Tone mod

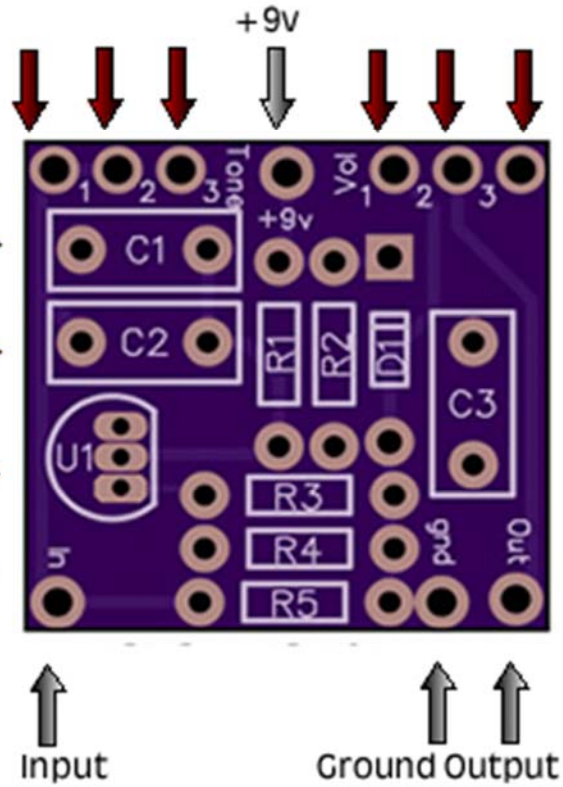
Changing the values of c1 and c2 will change the frequency range of the Tone Control. Also note c3 will affect the bass output of the circuit as well (increase for more bass, decrease for less). I've found the best combination for this set up is as listed above. Socket these 3 caps and experiment / adjust to taste.



Note the numbers on the PCB (1,2,3) should be matched to the numbers on the pot. Pots with mounting lugs can be soldered directly to the PCB

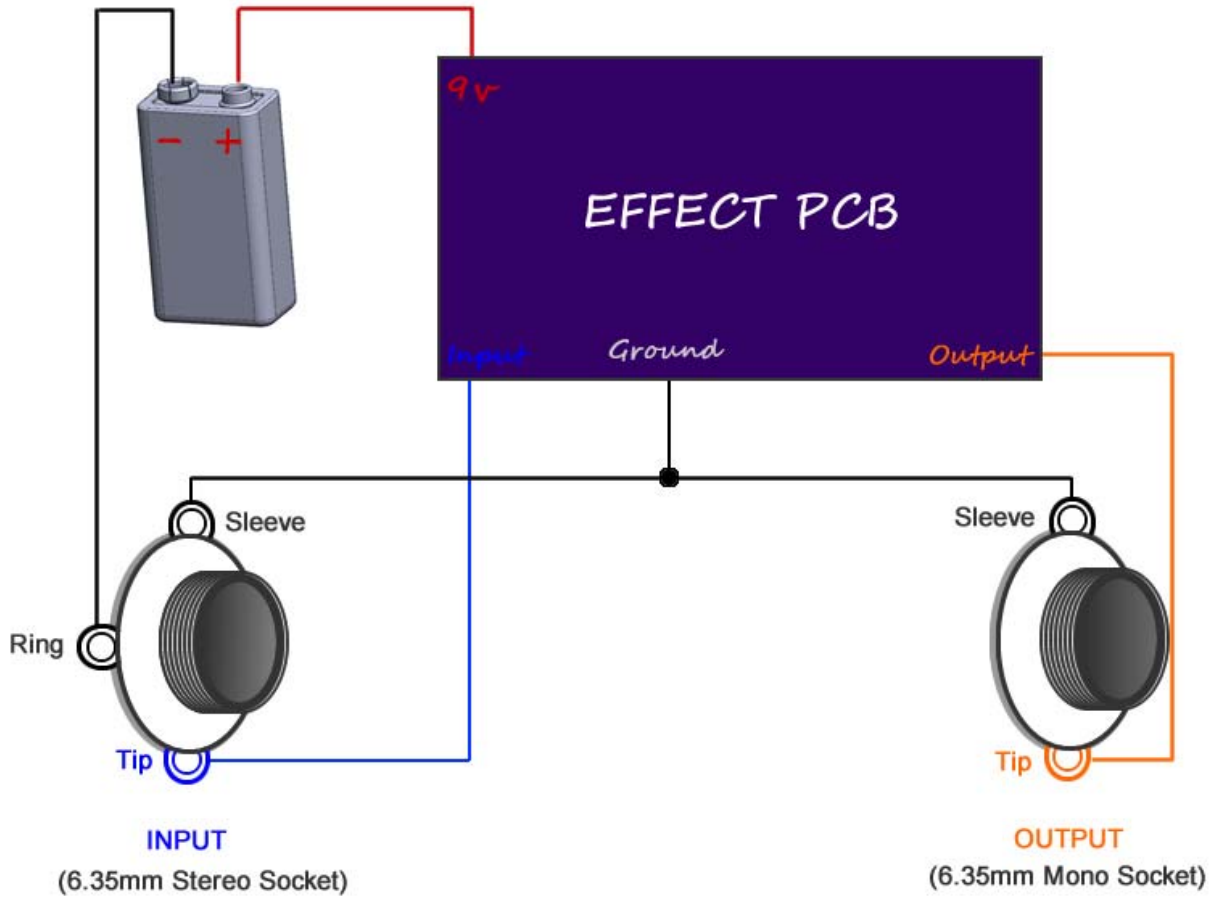
C1 & C2 set the upper and lower limit of the tone control. Experiment with these values

Check the pinout of the transistor you are using. The square pad on the layout indicates the emitter. Use a socket if you plan to experiment!



# Testing Your Effect

Using aligator clips or soldering directly, wire your effect as in the following...



## Input and Output Sockets

Pay close attention to the lugs of your sockets. Look at them side on so that you can distinguish the sockets individual layers. For instance the tip lug is connected to tip contact. The stereo jack looks the same as the socket below except it has an extra lug and contact for "Ring".

